



Bailer sampler, stainless steel

Manual



Meet the difference

Contents

Description of the bailer sampler	3
Taking samples with the bailer sampler	3
Cleaning	3
Applications	3

Nothing in this publication may be reproduced and/or made public by means of print, photocopy, microfilm or any other means without previous written permission from Royal Eijkelkamp. Technical data can be amended without prior notification.

Royal Eijkelkamp is not responsible for (personal) damage due to (improper) use of the product.

Royal Eijkelkamp is interested in your reactions and remarks about its products and operating instructions.

Description of the bailer sampler

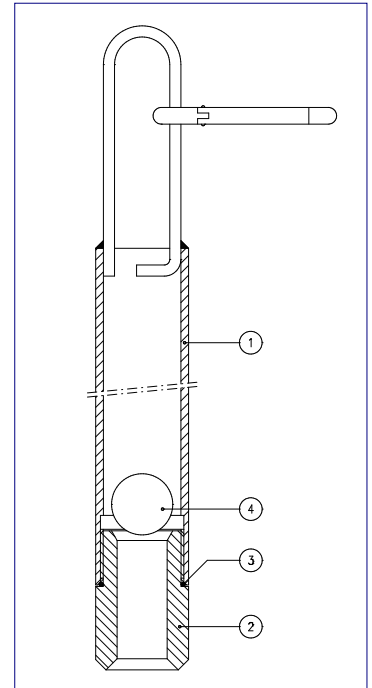
To take samples from non-flowing water the stainless steel bailer sampler was developed, it can be used to take samples from any predetermined depth. The bailer sampler (see figure) is a stainless steel tube (1) equipped at the lower end with a screwable inlet (2) with internal O-ring (3). This O-ring, in combination with a ball (4), makes sure that the sampler base is completely sealed. The stainless steel bailer sampler is available in 2 designs: 250 cc (tube \varnothing 33 x 28 mm) and 1000 cc (tube \varnothing 45 x 39 mm).

Taking samples with the bailer sampler

When the bailer sampler is lowered into the water, the water will flow through the sampler, as the tube is open at the top. Once the desired depth is reached, the sampler can be hoisted.

To ensure the renewal of the contents of the bailer sampler while letting it down, one must once and a while move the bailer sampler up and down half a meter.

Emptying is done by placing the bailer sampler on a sample bottle with the emptying device. Advantages: less oxidation, volatilization and turbulence. It is also possible to pour out the water via the open top of the tube.



Additional sampling is done by repeating the above action.

When sampling at different depths in the same water column, care should be taken to start with the shallowest sampling depth, because the water layers where the sampler has been passing through previously cannot be regarded as undisturbed anymore.

Cleaning

The bailer sampler can be cleaned by using acid or basic solutions, alcohol or detergents. The pH value of the cleaning liquid must be between pH 4 and pH 9.

Always rinse with clean water.

Sorbed residues of volatiles can be removed by a heat treatment. Also sterilisation is possible.

Applications

The bailer sampler can be used to take water samples from stagnant water at any desired depth, depending on the length of the measuring tape or the cable.

Apart from the standard one, measuring tapes in lengths of 30 and 50 meter are available. Teflon coated wires of 5 and 50 meter are also available.

Taking representative samples is possible in open water, auger holes and wells. The bailer sampler is often used in filter tubes. The samples taken can be analysed for chemical, biological and/or bacteriological research.