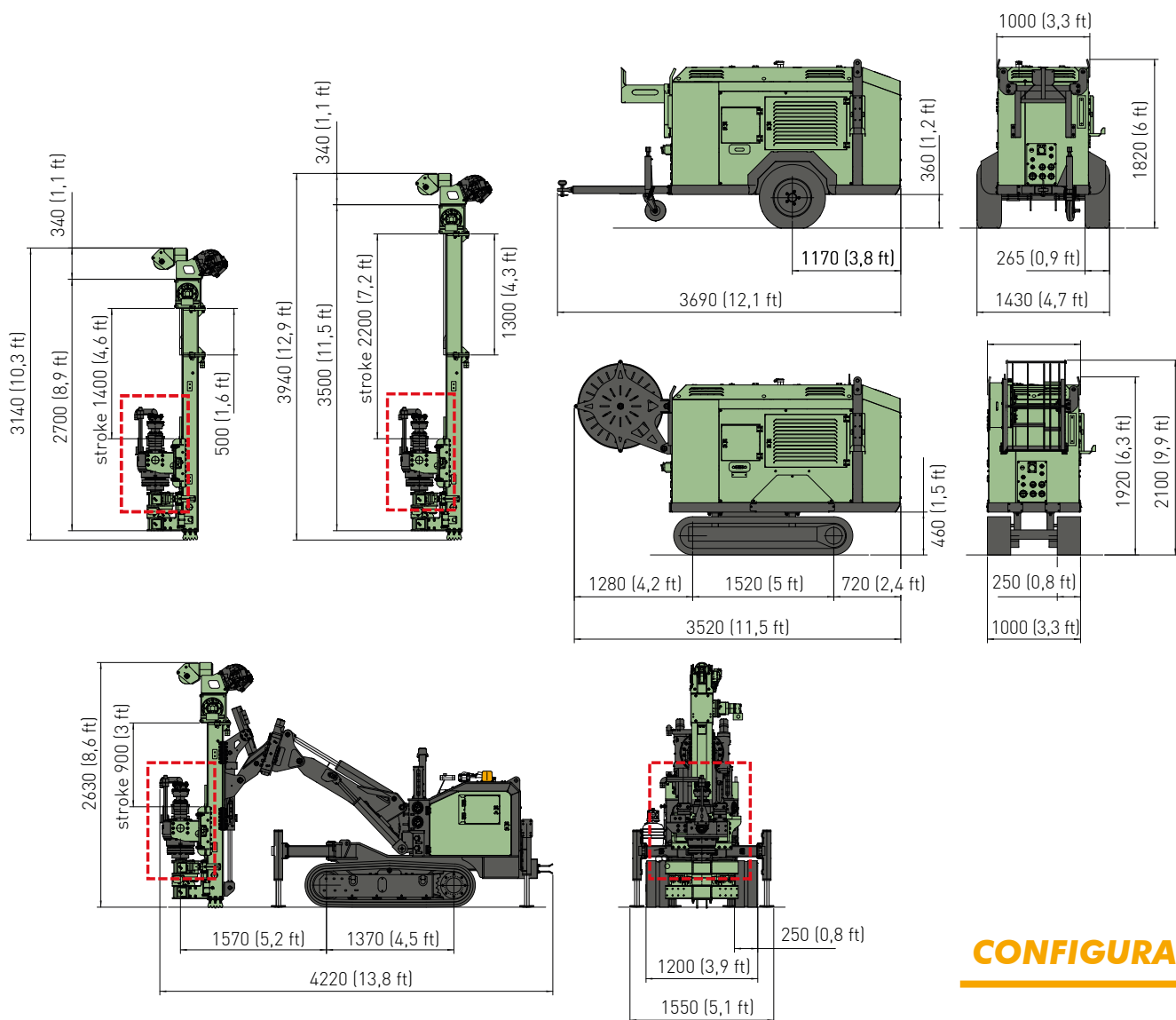


# MITO 4CS

Multipurpose **Drilling Rig**



**ITALIAN** DRILLING RIGS  
MANUFACTURERS SINCE 1964



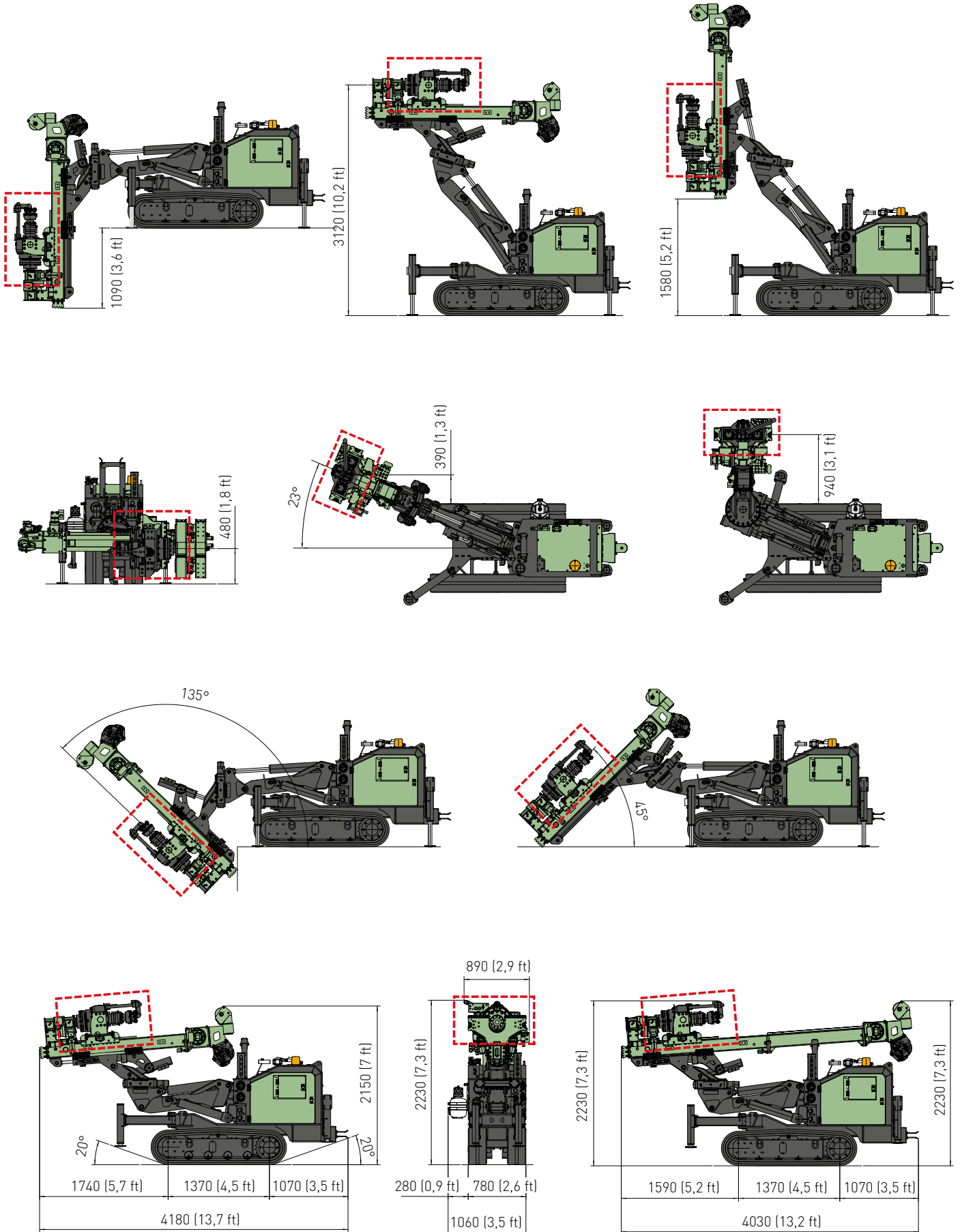
## CONFIGURATION

MOTORE DIESEL		DIESEL ENGINE
Potenza	Power	CAT C3.6 - Stage V - Tier 4F - 90 Kw (120,6 Hp) KUBOTA V3800 - Stage IIIA - Tier 3 - 74 Kw (100 Hp)
Capacità serbatoio gasolio	Fuel tank capacity	90 l (23 gal)
Capacità serbatoio olio idraulico	Oil tank capacity	230 l (60 gal)
ANTENNA		MAST
Corsa testa di rotazione	Rotary head stroke	900-1400-2200 mm / (2,9- 4,6-7,2 ft)
Tiro nominale	Nominal Pull-up force	5000 daN (11240 lbf)
Spinta nominale	Nominal Pull-down force	5000 daN (11240 lbf)
TESTA ROTANTE		ROTARY HEAD
Coppia max.	Max. torque	1280 daNm (9440 lbf*ft)
Velocità max.	Max. speed	1220 rpm
MORSE		CLAMP AND BREAKER
Diametro	Diameter	40-250 mm (1,6"-9,8")
PESO		WEIGHT
		~4300+2100 Kg (~9500+4600 lbf)



# MITO 4CS

Innovation  
& Versatility.



# MITO 4CS

**Innovation, Power, Versatility.**



## ACCESSORI - ACCESSORIES

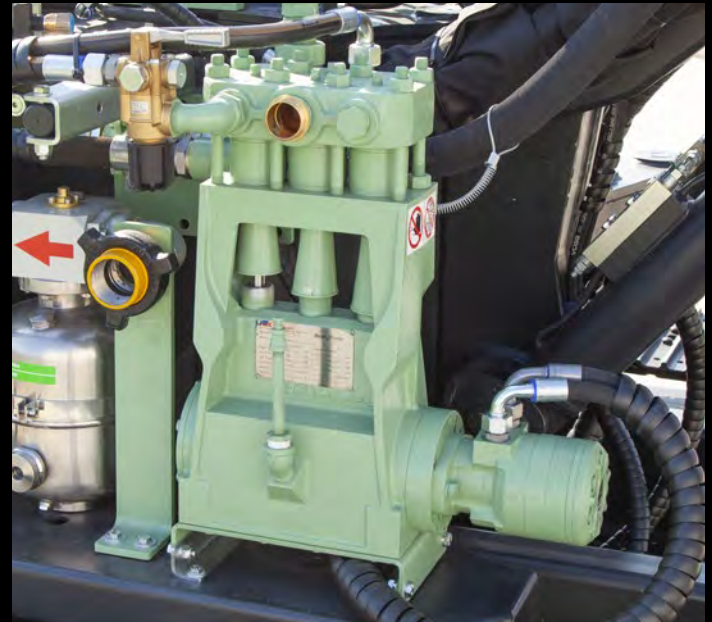
Martello idraulico	Hydraulic drifter	
Pompa triplex	Triplex pump	160 l/min - 48 bar / (42 gpm - 696 PSI)
Pompa schiuma	Foam pump	34 l/min - 38 bar / (9 gpm - 550 PSI)
Pompa lavaggio	Washing pump	15 l/min - 200 bar / (4 gpm - 2900 PSI)
Lubrificatore di linea	Line lubricator	8,5 l/min - (2,25 gpm)

ALTRI OPTIONAL DISPONIBILI A RICHIESTA - OTHER OPTIONALS ARE AVAILABLE ON REQUEST

Also available



SELF CHARGING HYBRID SYSTEM - for rig moving.  
ELECTRIC MOTOR 8 Kw - 48 V - Rechargeable lithium batteries.



I dati esposti sul presente catalogo possono variare senza preavviso - Specifications may change without notice

