



CC 200

Compact Crawler 200 kN

The world's most compact 200 kN CPT rig

- Small, but powerful
- Easy to operate
- Detachable CPT pusher
- Easy to transport
- Perfect for restricted access sites



The Royal Eijkelkamp Compact Crawler CC 200 is the perfect solution for CPT projects where access and manoeuvrability are crucial. Its compact dimensions allow operators to access locations that are out of reach for most rigs. This includes narrow plots between buildings, confined urban job sites, and even indoor areas accessible only through standard doorways. Despite its small footprint, the CC 200 delivers a powerful 200 kN pushing capacity. Its stable four-anchor setup ensures stable penetration and reliable CPT data in challenging soils.

Where crawler access ends, the work can continue. The CC 200's detachable CPT pusher can be anchored directly to solid floors, allowing CPT testing in basements, industrial halls, tunnels, and other restricted spaces where equipment cannot be driven. The pusher is connected via hydraulic hoses to the crawler as an external power unit. This gives operators the ability to obtain accurate CPT data in previously inaccessible locations and achieve penetration depths that smaller solutions cannot match. The CC200's compact mobility and flexible setup let you cover more sites and deliver reliable CPT results in places other rigs can't reach.



Detectable CPT pusher



RC for safe operation



Foldable anchor mast and rod rack for tight access



Quick dual position anker system



Large diameter anchor and powerful auger high reaction force

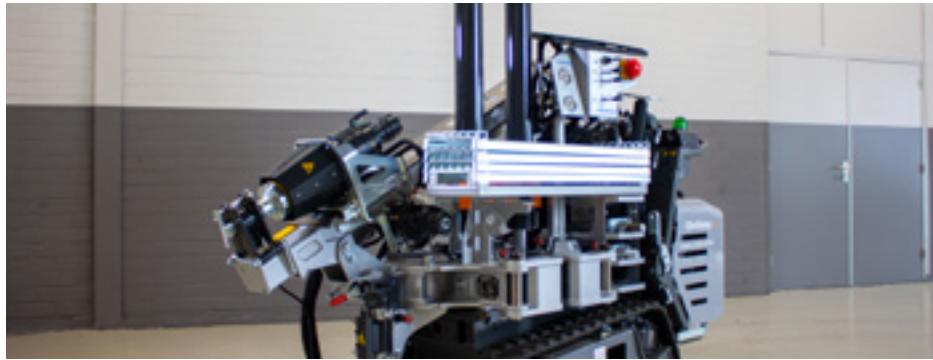
Detachable CPT pusher

Allows CPT in confined or low-emission environments by detaching the pusher and anchoring it to a frame. Powered via hoses from the crawler or an electric power pack.



Foldable rod rack and anchor mast for tight access

Narrow and low-profile design fits through doors and under low ceilings. Compact size and lightweight build allow transport in a standard van, ideal for urban jobs.



RC for safe operation

Remote control lets the operator drive the crawler and install anchors from a safe distance, reducing exposure to moving components.



Quick dual position anchor system

Single-auger system that installs anchors on both sides of the rig for fast setup and perfectly centered anchor placement of both four anchors.

Large diameter anchor and powerful auger for high reaction force

The required reaction force is generated by four ground anchors installed with a powerful rotary head. With a torque output of approx. 2,800 Nm (2,065 ft-lbs) and helix diameters from 200 mm (8 in) to 360 mm (14 in), the system ensures optimal anchoring performance across varying soil conditions.

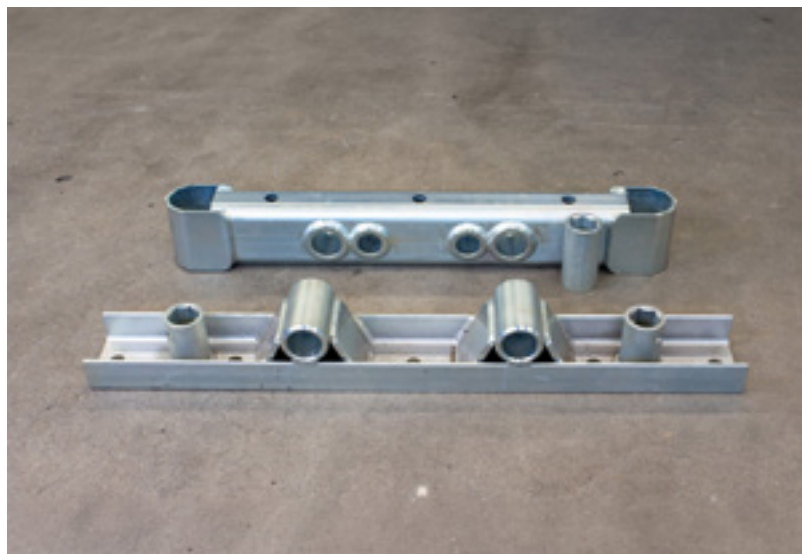


Available add-ons

Ground frame

The ground frame is designed for situations where auger installation is not feasible due to sub-surface constraints or hard ground conditions. It can be securely anchored to solid surfaces, such as concrete slabs, using drilled holes and mechanical bolts.

Once installed, the machine is mounted directly onto the ground frame, providing a stable and reliable reaction base.



Hoses

These hydraulic hoses are required when using pushers detached from the main rig. In this configuration, the rig functions as a standalone hydraulic power unit, transferring power to the remote pusher via the hose set.



Different size anchors

A range of anchor sizes (200-360 mm (8-14 in)) is available to ensure optimal performance across varying soil conditions. Each anchor type is engineered for specific geotechnical environments. For example, anchors designed to perform reliably in loose or sandy soils, as well as models optimised for compacted or mixed ground layers.



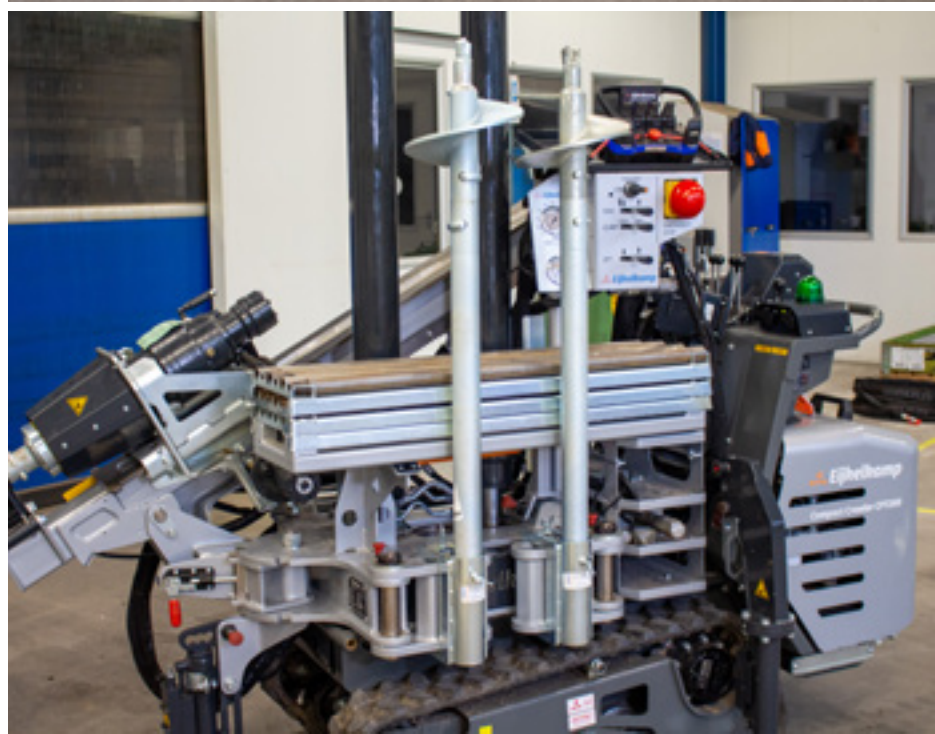
Anchor extension

Anchor extensions are used when deeper installation is required to reach more compact soil layers. This is particularly important in locations where near-surface soils are too loose to deliver the necessary reaction force for CPT pushing. The extension allows the anchor to penetrate to a stable layer capable of providing the required resistance.



Anchor holders

Anchor holders are designed to safely store and transport anchors directly on the CC 200 rig. They keep the anchors securely in place during travel and ensure they are immediately accessible during installation work.



Ball Clamp

The ball clamp is suitable for both pushing and pulling CPT tubes. Switching modes is simple, just invert the clamp.

Designed for tubes up to 36 mm (1.44 in), it offers a capacity of 260 kN (58,450 lbf). Hardened metal balls ensure a secure grip while evenly distributing clamping force to prevent tube damage or deformation.



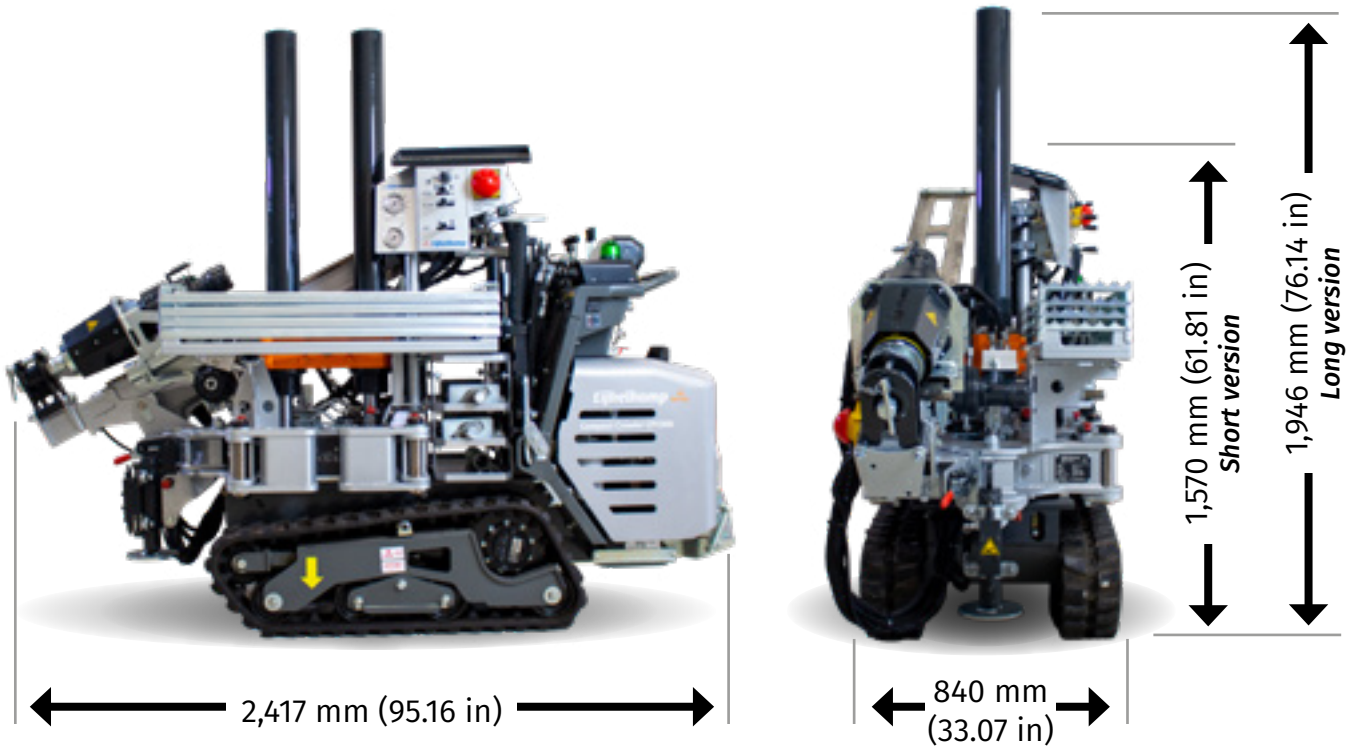
Technical specifications

Power	14.9 kW @ 3,600 rpm (20 hp @ 3,600 rpm)
Diesel tank	8.5 l (2.25 gal)
Specific ground pressure	0.16 kg/cm ² (2.28 psi)
Driving speed (2-speed)	2.5 km/h (1.5 mph) and 4 km/h (2.5 mph)
CPT stroke (maximum)	550 mm (22 in) or 1.050 mm (41 in)
CPT downward speed	15 to 25 mm/sec (0.6 to 1 in/sec)
Upward speed	80 mm/sec (3.15 in/sec)
Max. push force	200 kN (44,960 lbf)
Max. pulling force	320 kN (71,940 lbf)
Rotary head torque	2,800 Nm (2,065 ft-lbs)
Reaction force	Through ground anchor or ground frame
Electronics	12V DC outlet for charging laptop and CPT DAQ

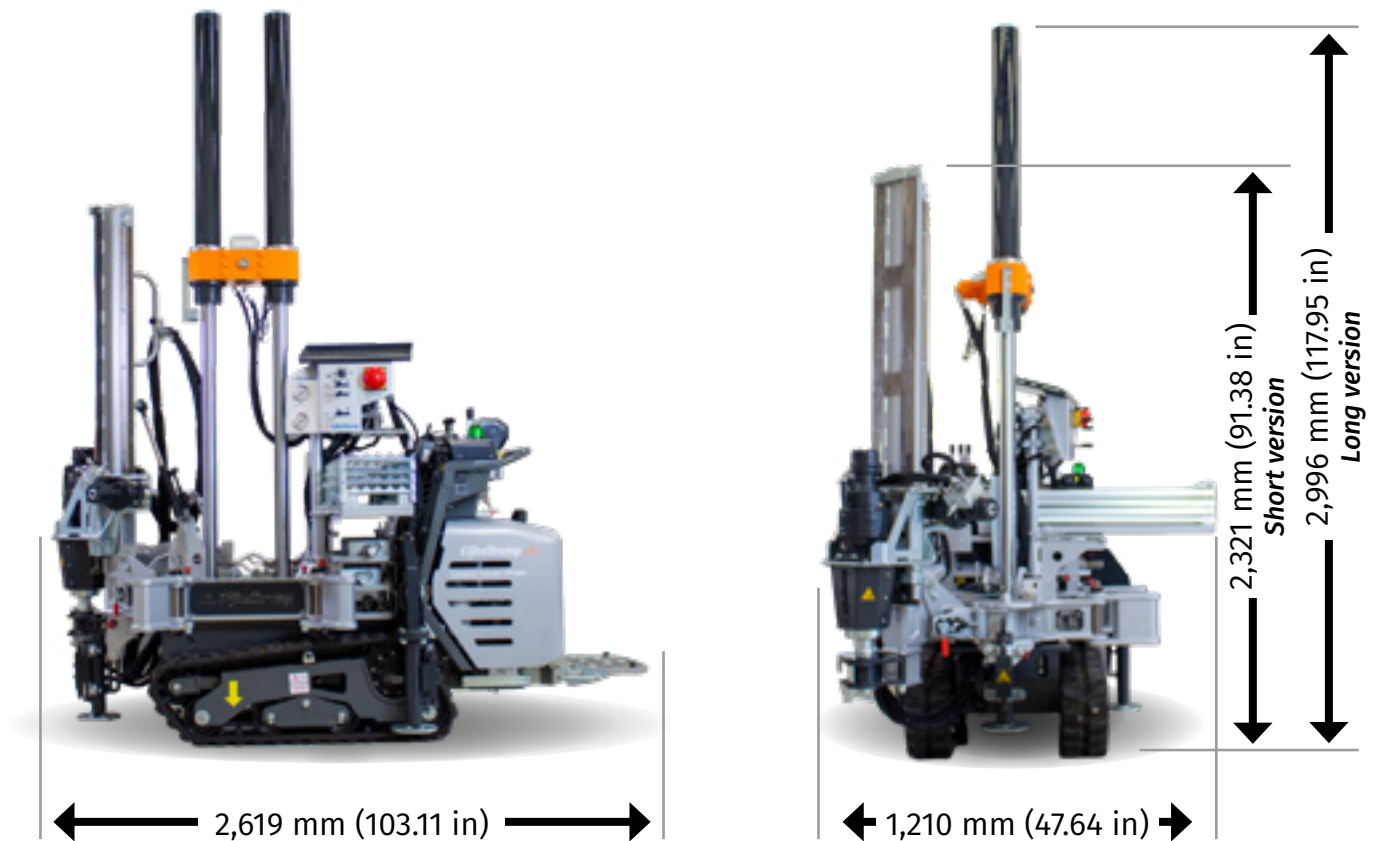


CC 200 long and short stroke version, transport mode

Weight short version	1,360 kg (3,000 lbs) (without rods)
Weight long version	1,390 kg (3,065 lbs) (without rods)



CC 200 long and short stroke version, operational mode





Find out more

View the CC 200 and our other CPT rigs on our website, or scan the QR code or [visit this link for more information.](#)



Eijkelkamp Customer Service Agreement

Royal Eijkelkamp provides the possibility to add a tailor fit service contract to the extensive range of machines we offer. We call these the Eijkelkamp Customer Service Agreements. We have three types of Customer Service Agreements called Start, Pro and Royal. The Royal type is a service contract that can be tailor fit to the needs of the customer. All Eijkelkamp Customer Service Agreements will be delivered with the Eijkelkamp Service Assistant, this is an advanced track & trace system that is available for use by customer and driller on site via the mobile phone application and web browser.

For more information on demos, pilot projects or personal advice contact our sales department!

For urgent service calls and/or technical information contact or special service telephone: +31 313 800 967

ROYAL Eijkelkamp
Meet the difference

Nijverheidsstraat 9
6987 EN Giesbeek
The Netherlands

T +31 313 880 200
E info@eijkelkamp.com
I royaleijkelkamp.com

Our commitment to product improvement requires that we reserve the right to change equipment, procedures and specifications at any time.